



**Baltic Sea Region**  
Programme 2007-2013

Part-financed by the European Union  
(European Regional Development Fund  
and European Neighbourhood and  
Partnership Instrument)

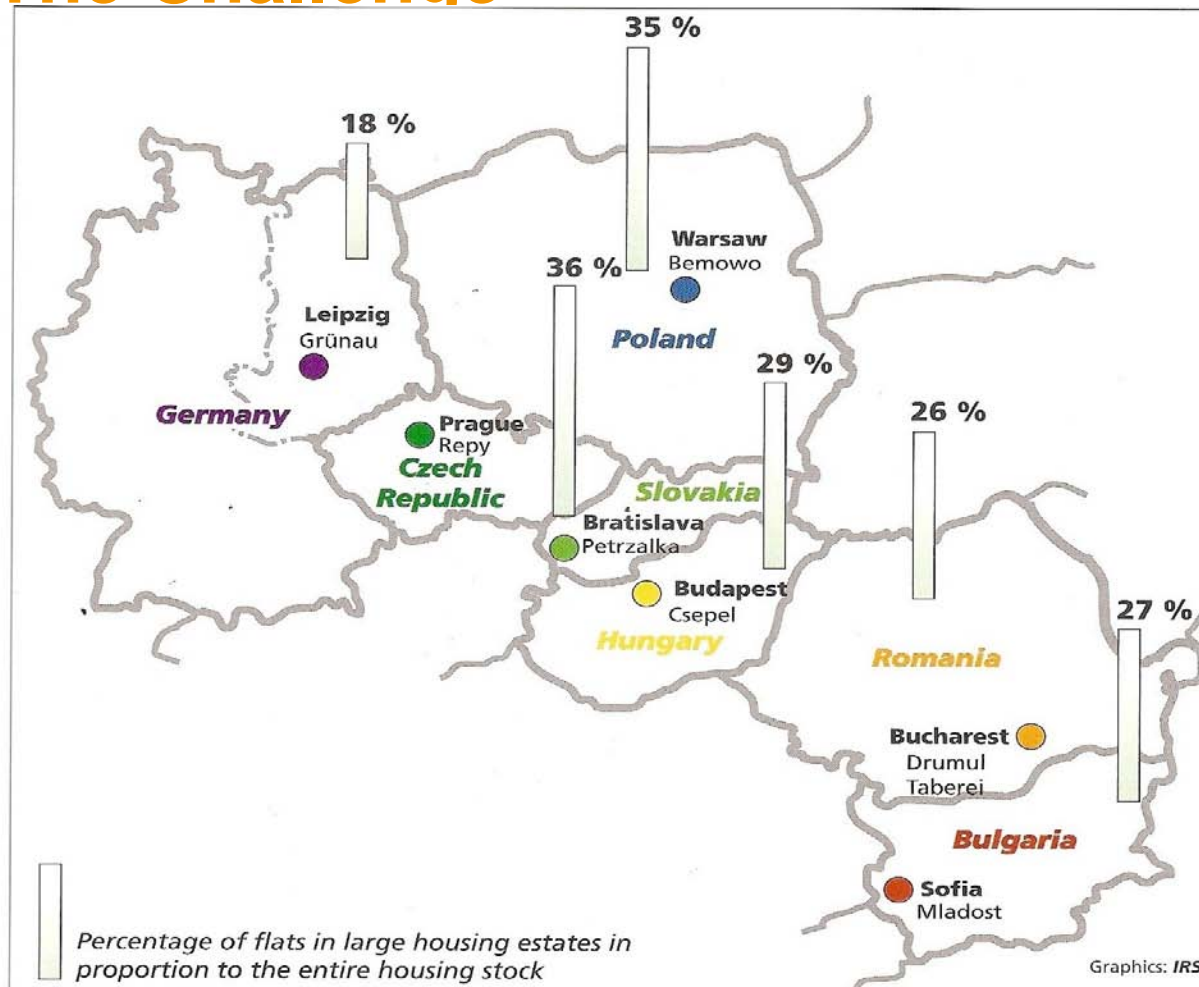


# Energy Efficiency and Integrated Urban Development

**Thomas Knorr-Siedow**  
ArgeURBEnergy/UrbanPlus

10 June 2010 – Midterm Conference Warszawa

# 1. Housing in Central and Eastern Europe The Challenge

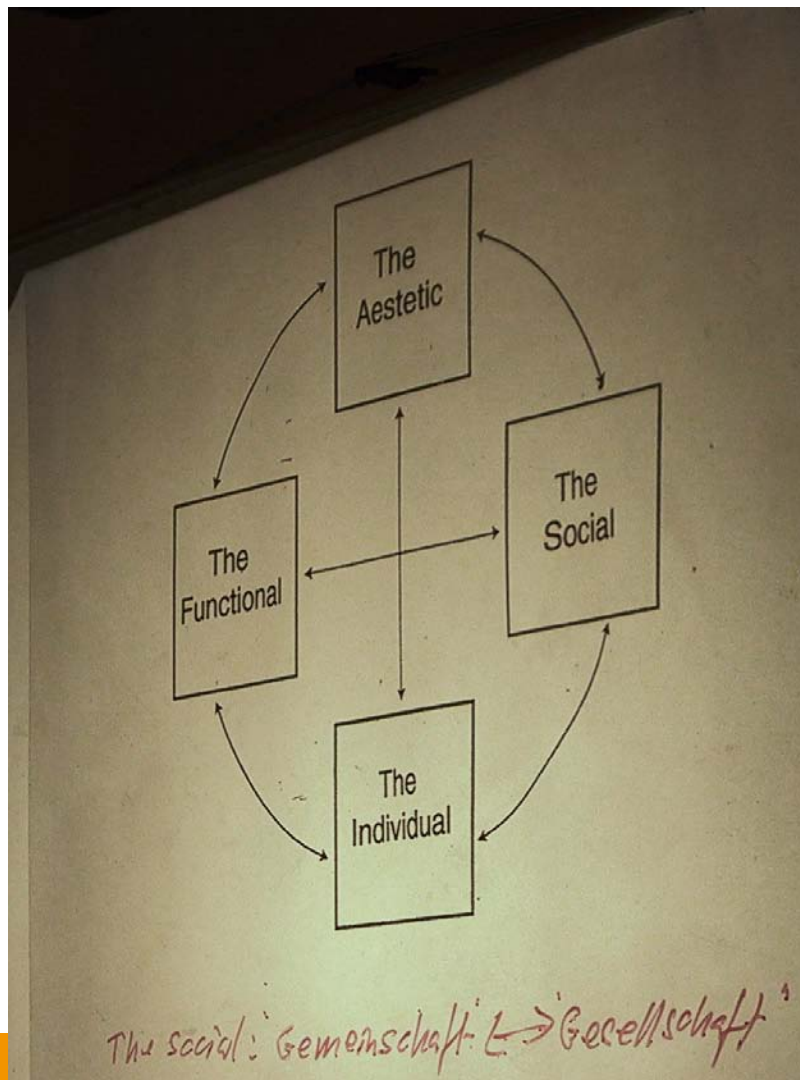


... an indispensable part of the housing stock ...



a French solution – demolition for social, not physical reasons

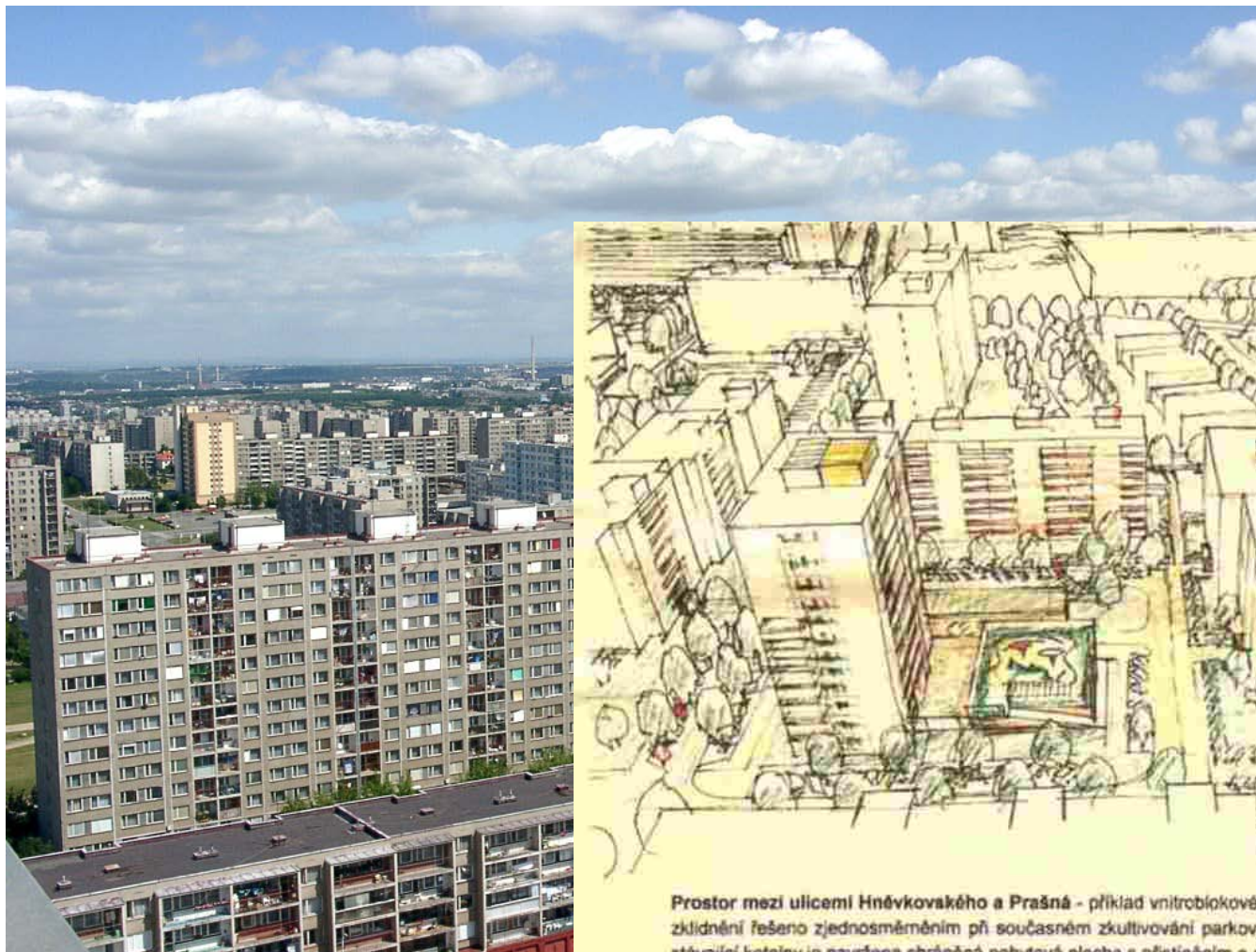
# Searching for the qualities ...



- The social?
  - Still integrated
- The ecological?
  - Compact structures
  - Land-use and landscaping
  - CO2 foot-print
  - Climate protection and building



# Searching for the qualities ...



Prostor mezi ulicemi Hněvkovského a Prašná - příklad vnitroblokového prostoru narušeného dopravou, kde je zklidnění řešeno zjednosměrněním při současném zkultivování parkovacích stání a doplnění zeleně. Na střeše stávající kotelny je navržena chráněná pobytová plocha s přístíněním a možné umístění hřiště pro malé děti.



# Searching for the qualities ...



# Seeing the deficits ...





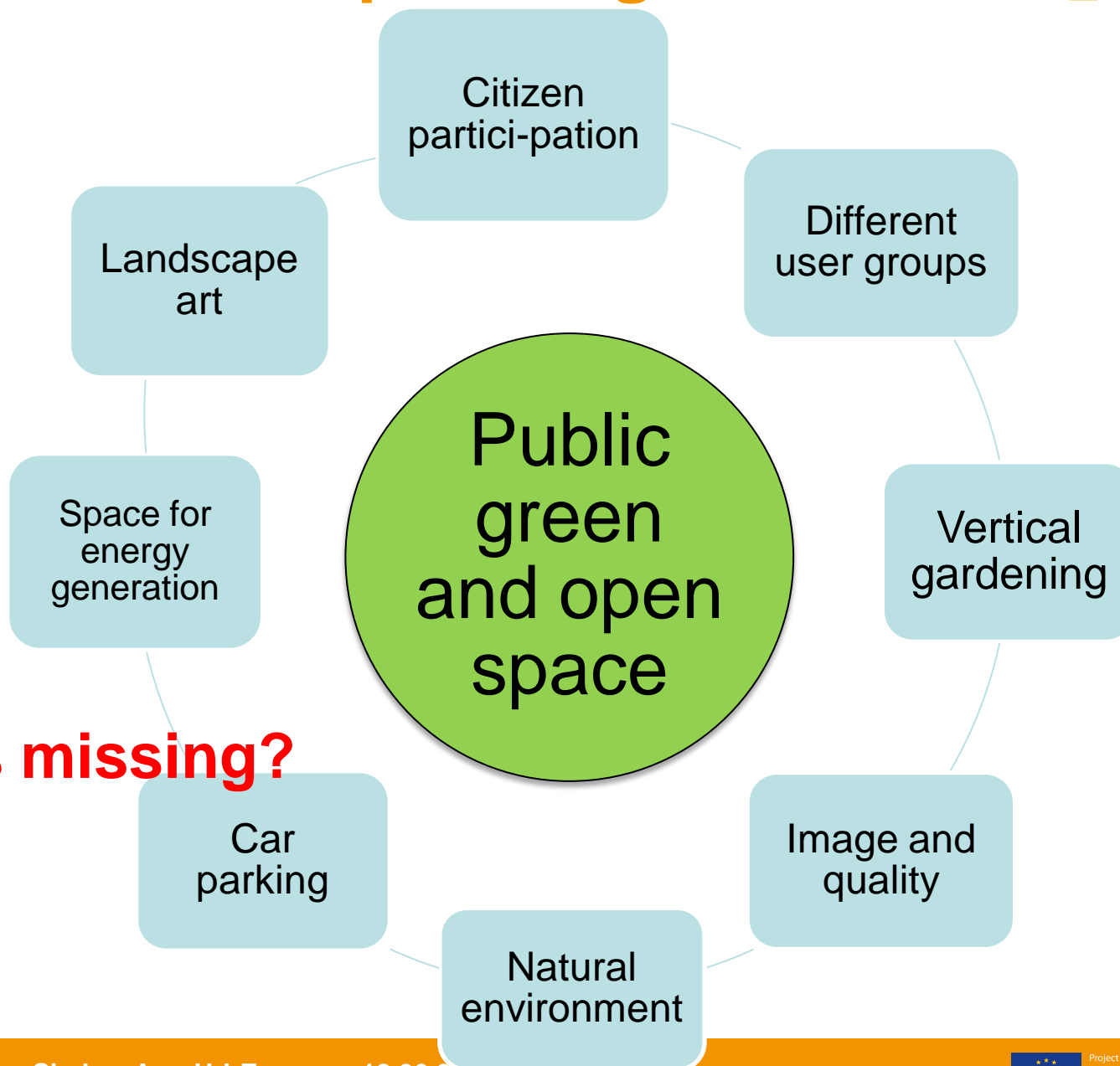
## 2. SWOT Analysis

- A tool to analyse complex planning and development issues used in URBEnergy for all Target areas.

<b>Strengths</b>	<b>Weaknesses</b>
<b>Opportunities</b>	<b>Threats</b>

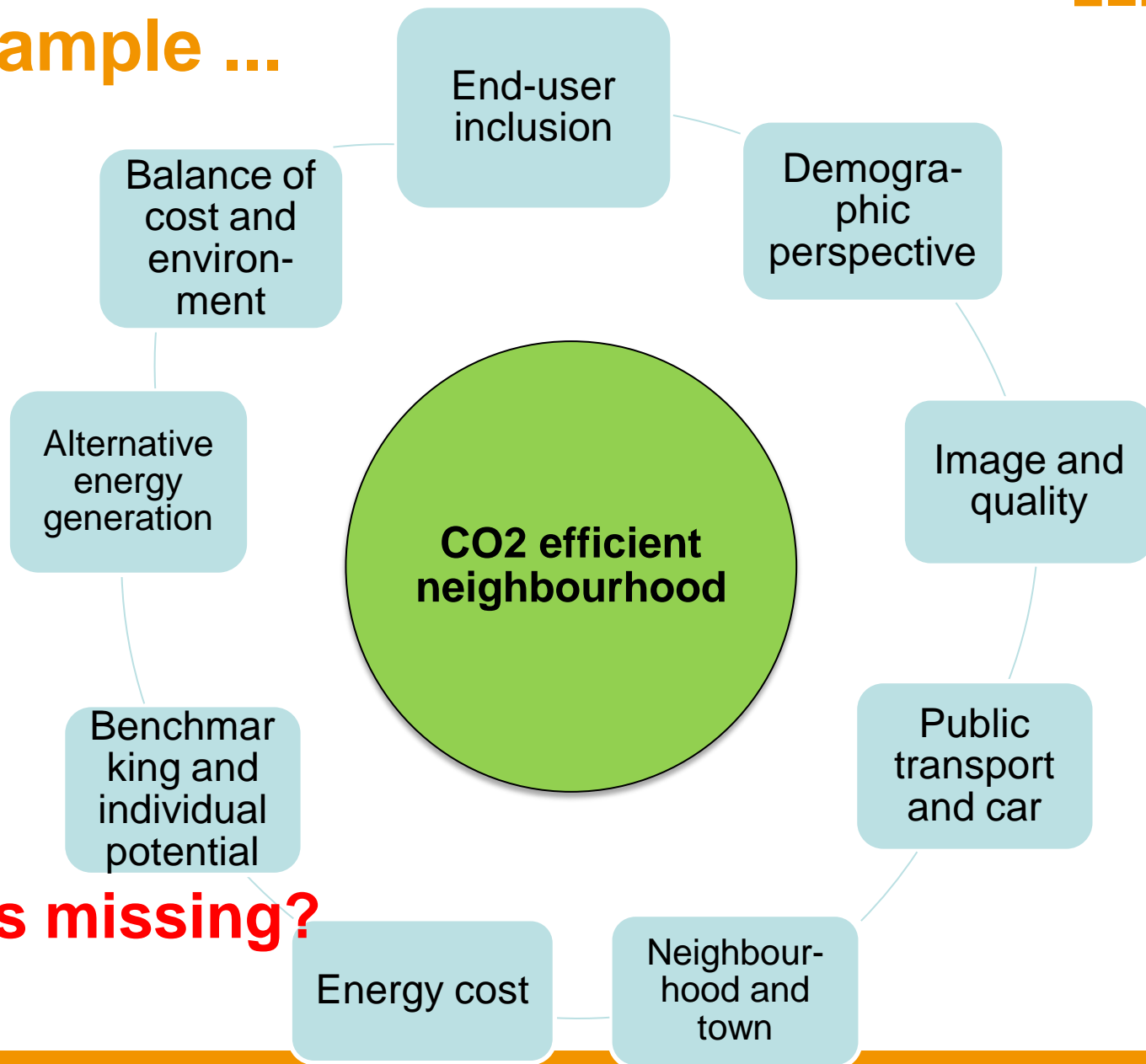


# Translation into planning



**What is missing?**

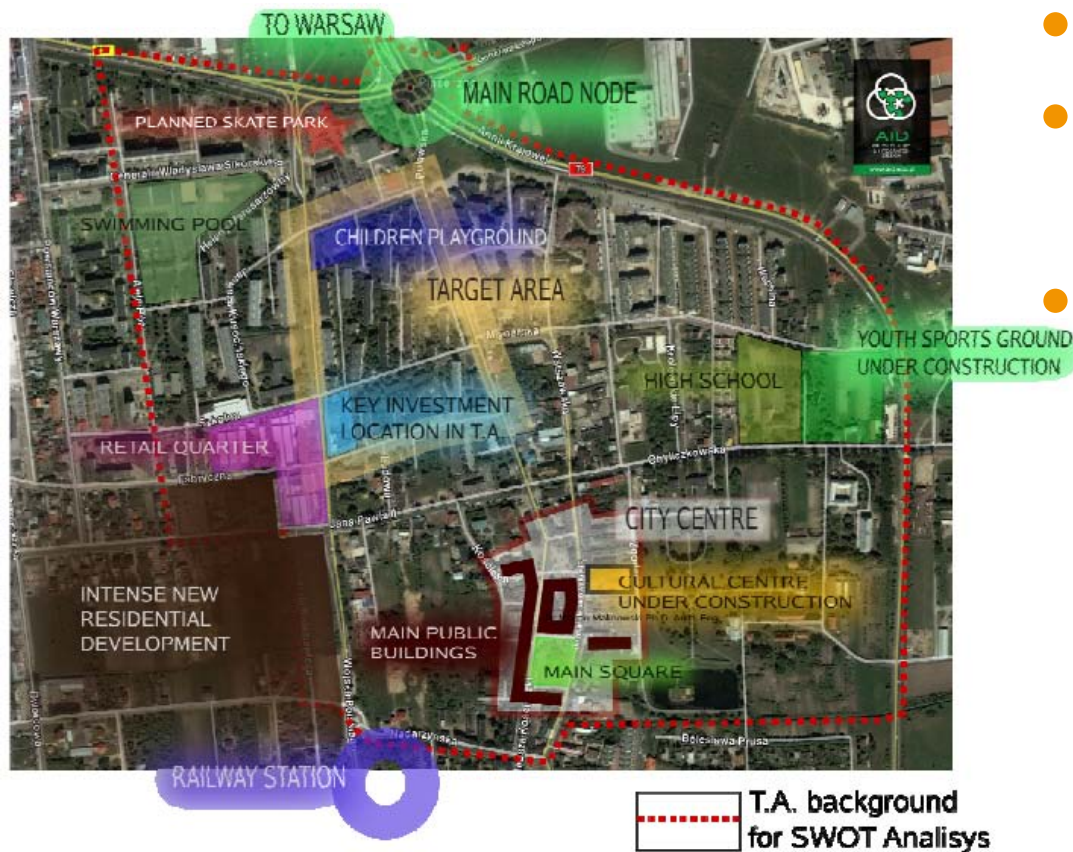
# An example ...



What is missing?

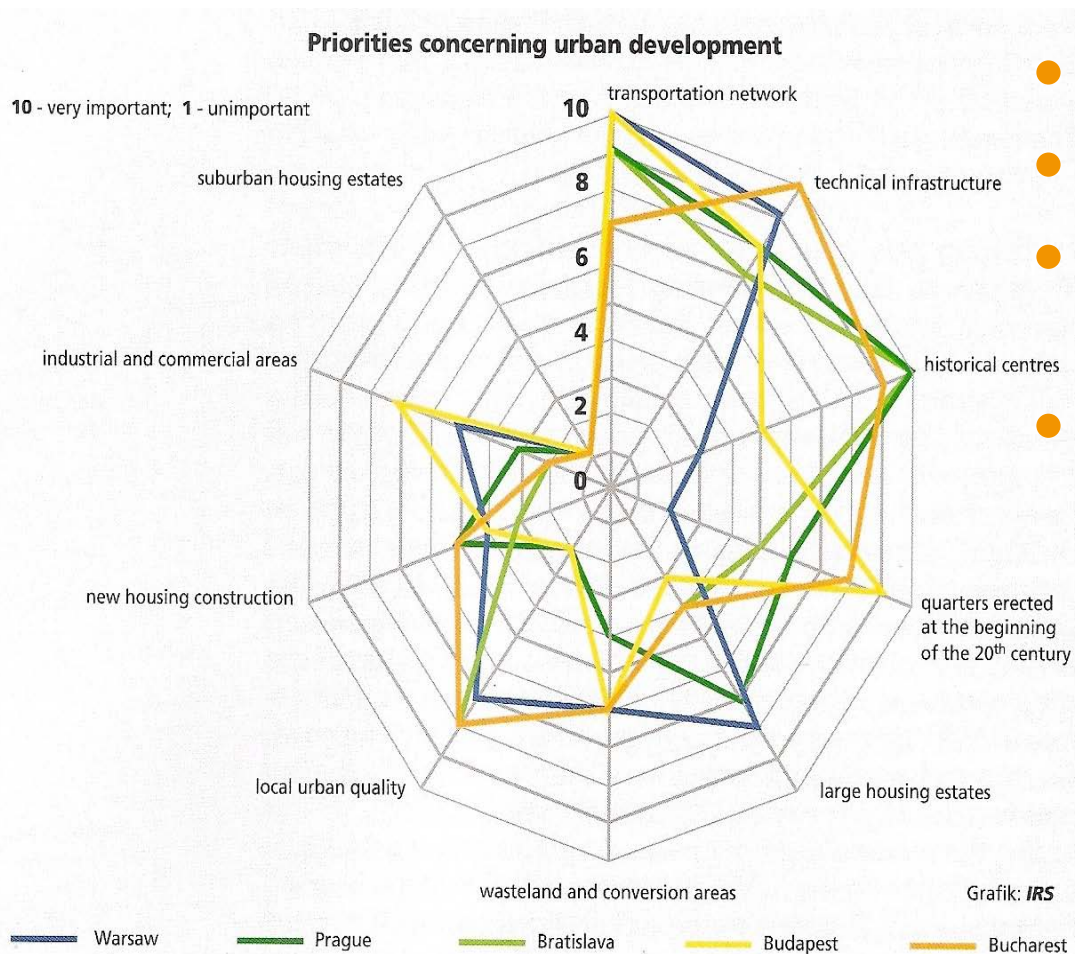
# What seems to be missing?

- Demography
- Gender and diversity
- Safety
- Understanding of the Target areas as 'social space'



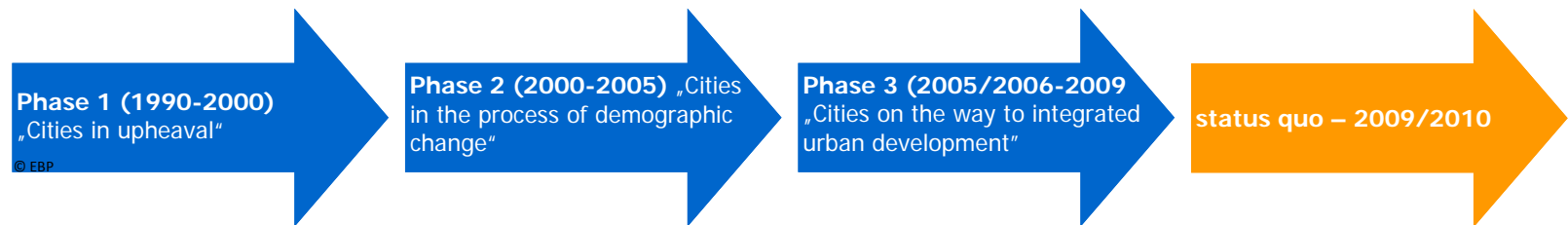


# Knowledge – Comprehensive and shared



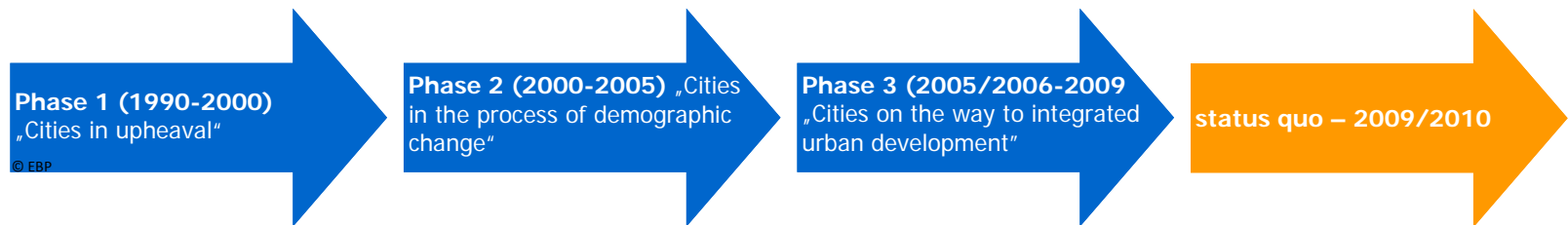
- Gathering knowledge
- Sharing knowledge
- Including the bearers of knowledge
- Cooperating with research
  - Social
  - Economic
  - Environment

### 3. The German experience after 1990

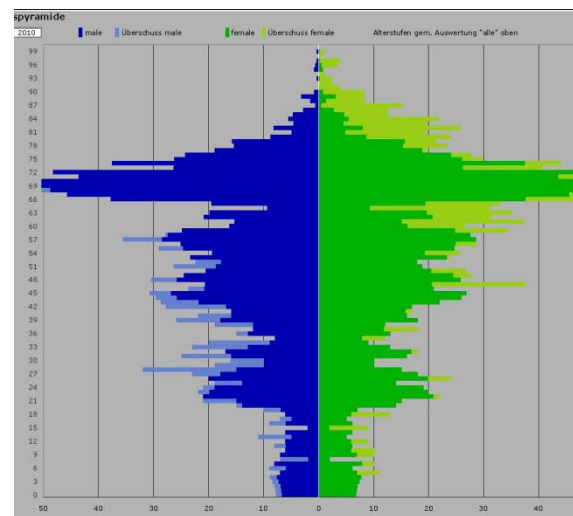
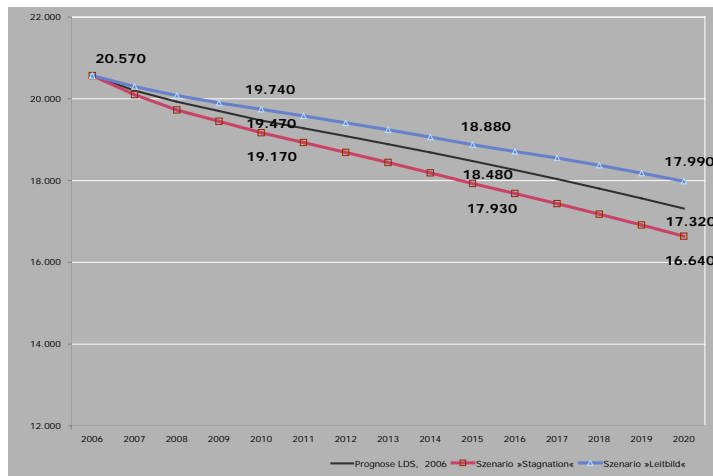


- **City development/planning in the 1990 sectoral and reactive**
- **High pressure to invest in infrastructure, existing buildings and in particular in new builds**
- **Lots of undesired consequences – High vacancy rate, urban sprawl, weakened inner cities**

# The German experience Phase 2

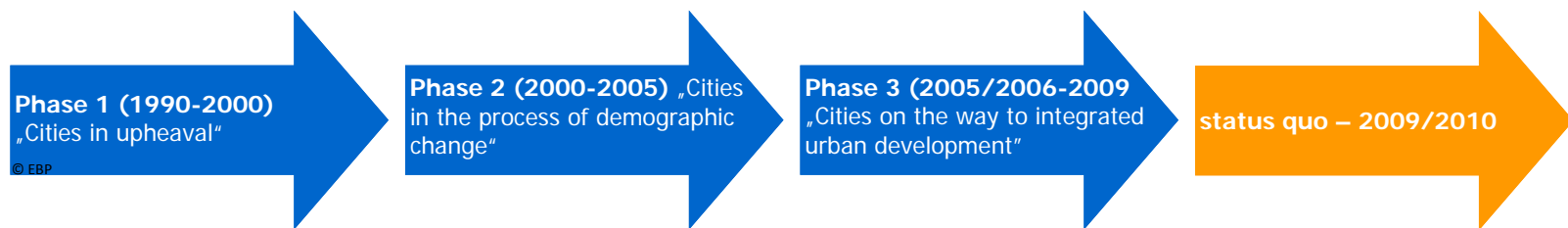


- Between 2000 and 2005 urban development/planning in the cities is characterised by reaction to demographic change and socio-spatial considerations



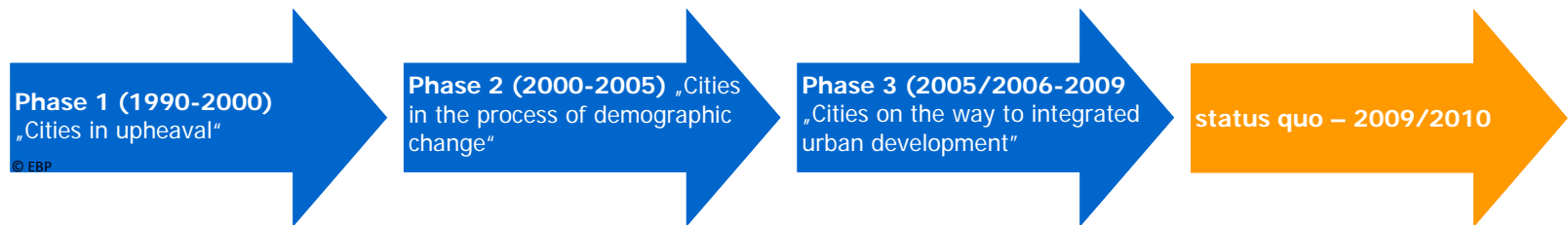


## The German experience Phase 3



- Since 2005 urban development is increasingly an interdisciplinary “framework policy” for market actors.
- Integrated urban development concepts (INSEKs) have provided Municipal ‘framework strategies’ as a basis for sectoral planning, projects and funding

# The German experience Financing



- **Keynesian approach during the 1990s**
- **Collaborative approach between Land, municipalities and housing actors**
- **Integrated approach to urban development has become established at every level of planning. Nevertheless, financing “climate change prevention” and “energy efficiency” are still focused on individual measures (building level) and have up to now rarely been integrated into city-wide concepts and plans.**

# The logics of INSEK





# The topic is hot ... another Urbenergy ...

Project within the European programme Central. Lead partner, the Hungarian town of Hódmezővásárhely. The Project aims at energy efficiency and on establishing renewable energy sources in central European towns.

Austria, Czech Republic and Hungary.

## 4. Close on a personal note ...

- In 1995 and 2010:
- When, if not now...
- Where, if not here ...
- Who, if not we ...



# Thank you very much ...

Ernst **Basler+Partner** GmbH



**B.B.S.M.**

Brandenburgische  
Beratungsgesellschaft für  
Stadterneuerung und  
Modernisierung mbH

urban<sup>plus</sup>  
Droste&Partner