

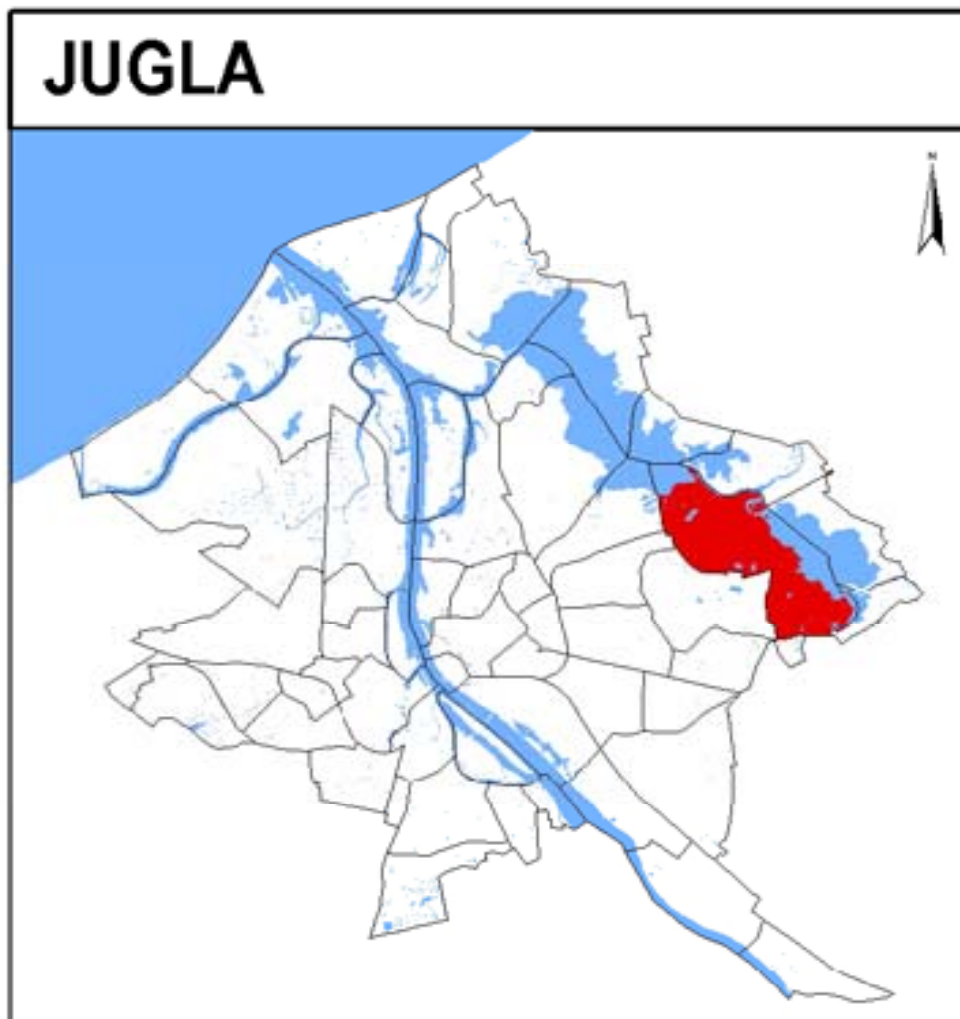


# Urban Development strategy for Jugla neighborhood – Current situation in spatial dimension

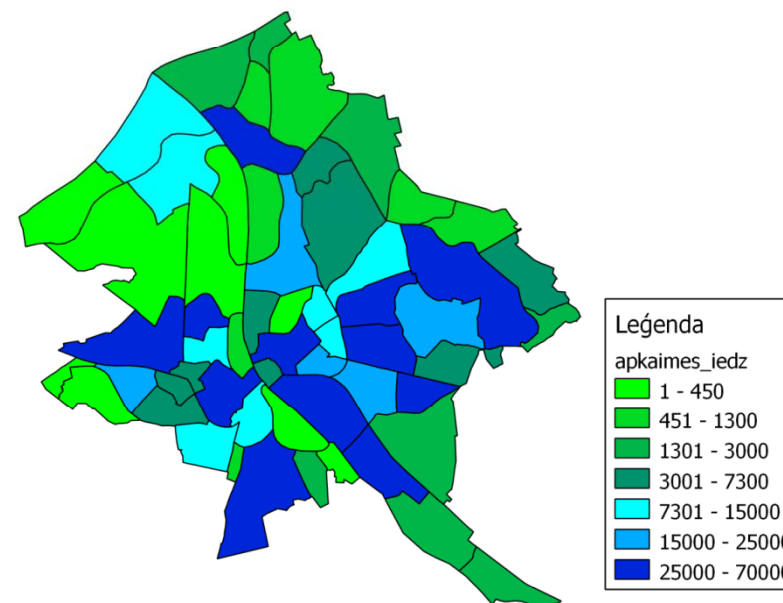
**Martins Menniks**  
Riga City

**21 – 22 October, 2010**  
Berlin

# JUGLA



- Area: 1409.9 ha
- Inhabitants (2010): 27 250 (10th in RIGA)



## Neighborhood planning in Riga

- **Neighborhood planning (pilot project in Jugla):**
  - Local planning;
  - Strategic and spatial planning;
  - Action plans included;
  - Architectonic solutions;
  - Energy efficiency;
  - Direct Public involvement.
- **Mid-term document:**
  - Energy efficiency issues as priority;
  - Sustainability approach;
  - Climate change as important topic.

# Neighborhood planning:

- **Prior activities:**

- Started neighborhood project of the Riga (Riga City Development department);
- Set neighborhood borders;
- Public discussions on borders and ideas
- Public web page [www.apkaimes.lv](http://www.apkaimes.lv);
- Idea of neighborhood implemented at the strategic documents of Riga City (Long term Development strategy of Riga till 2025 and Development program of Riga 2006 – 2018);

## [www.apkaimes.lv](http://www.apkaimes.lv)

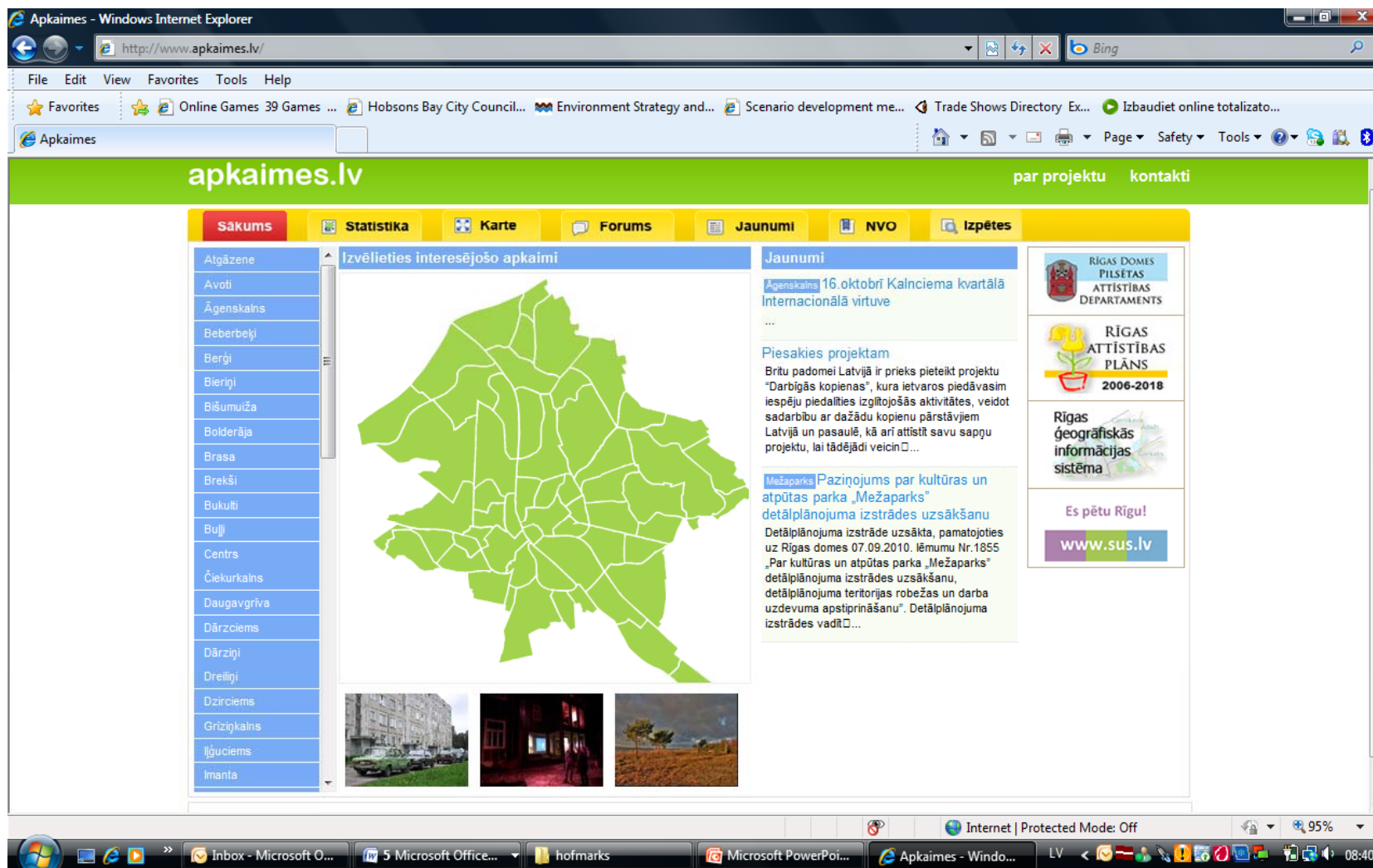
- **Idea of web page:**
  - Public involvement and information;
  - Web forum with in City and neighborhood;s
  - NGO involvement instrument;
  - Database of the researches on neighborhoods;
  - Idea of web page:

**Content of the web page:**

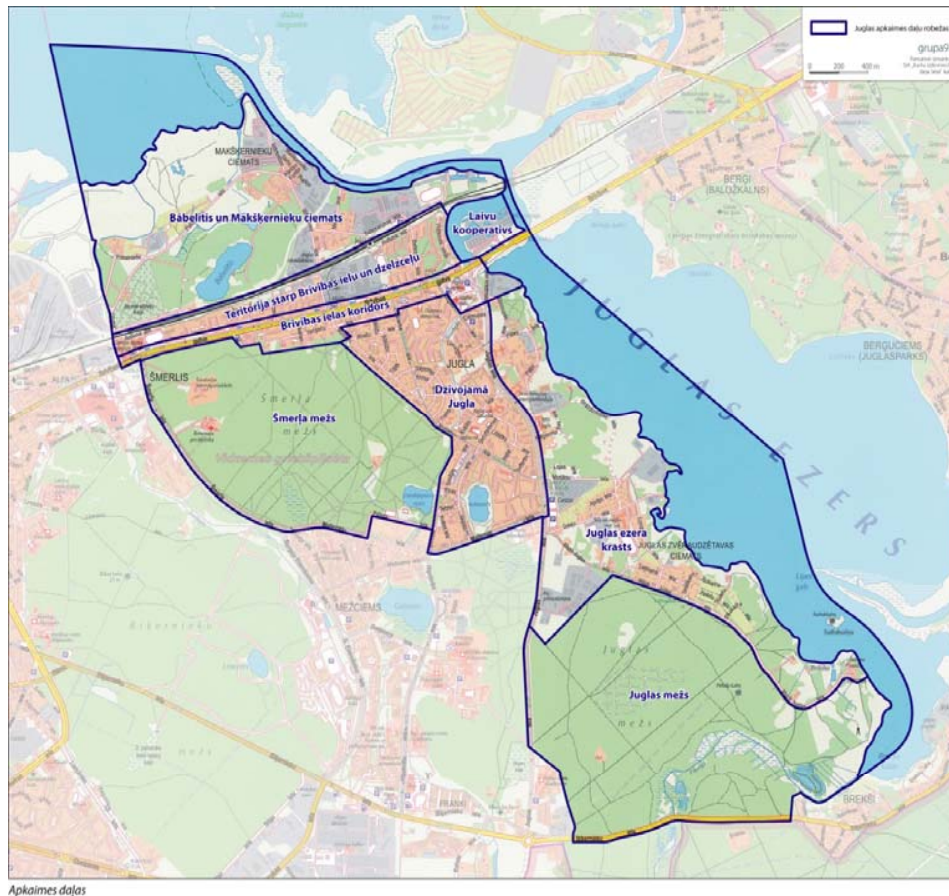
**Set neighbourhood borders;**

- Maps;
- Database;
- Forum;
- Etc.

# www.apkaimes.lv



# Spatial divison of Jugla



- **Five districts:**
  - Jugla forest;
  - Smerla forest;
  - Passage of Brivibas street (main street of Riga);
  - Territory between Brivibas street and Railway;
  - Lake Babelitis and Fisherman village



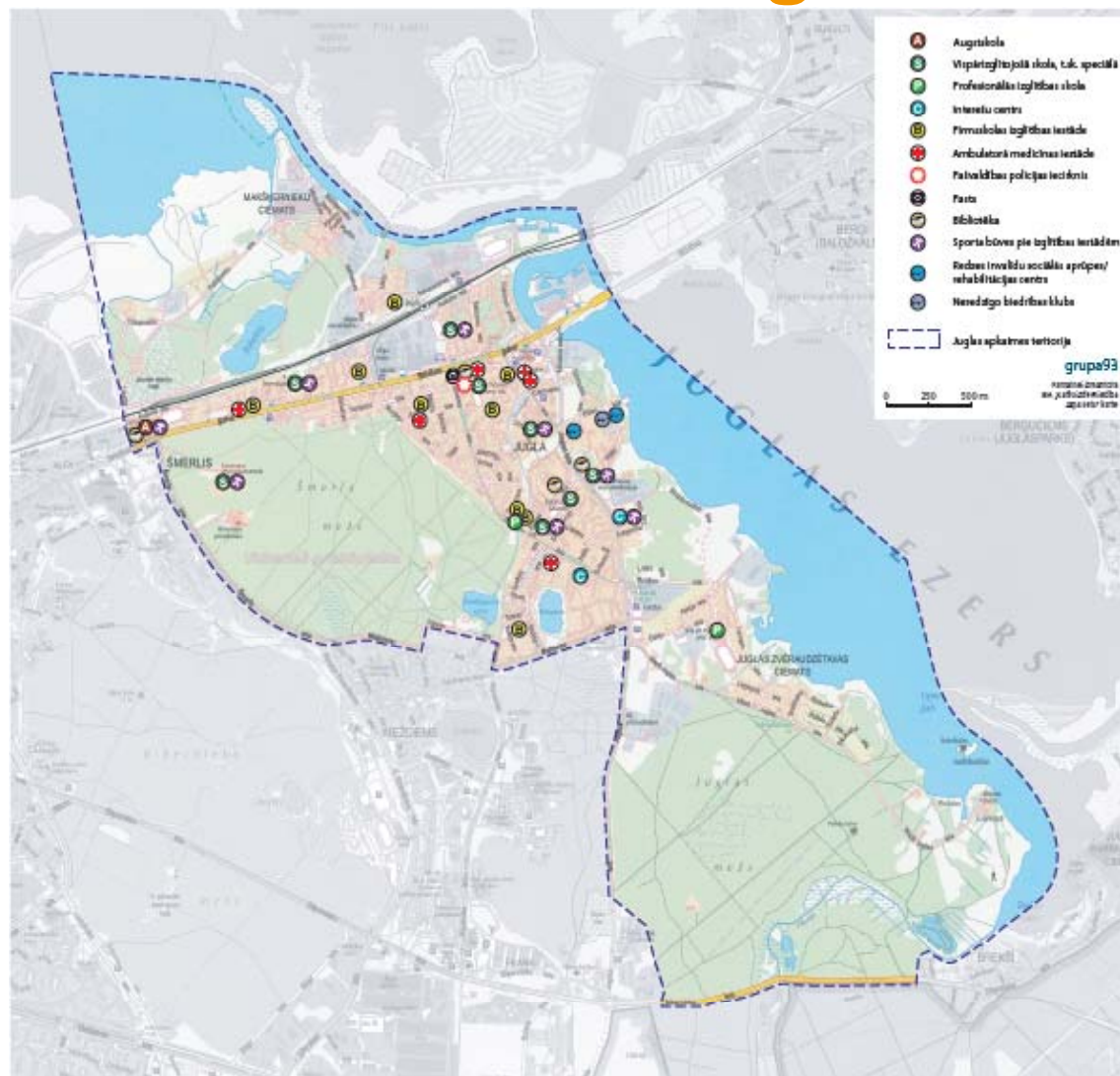
# Social infrastructure in Jgla



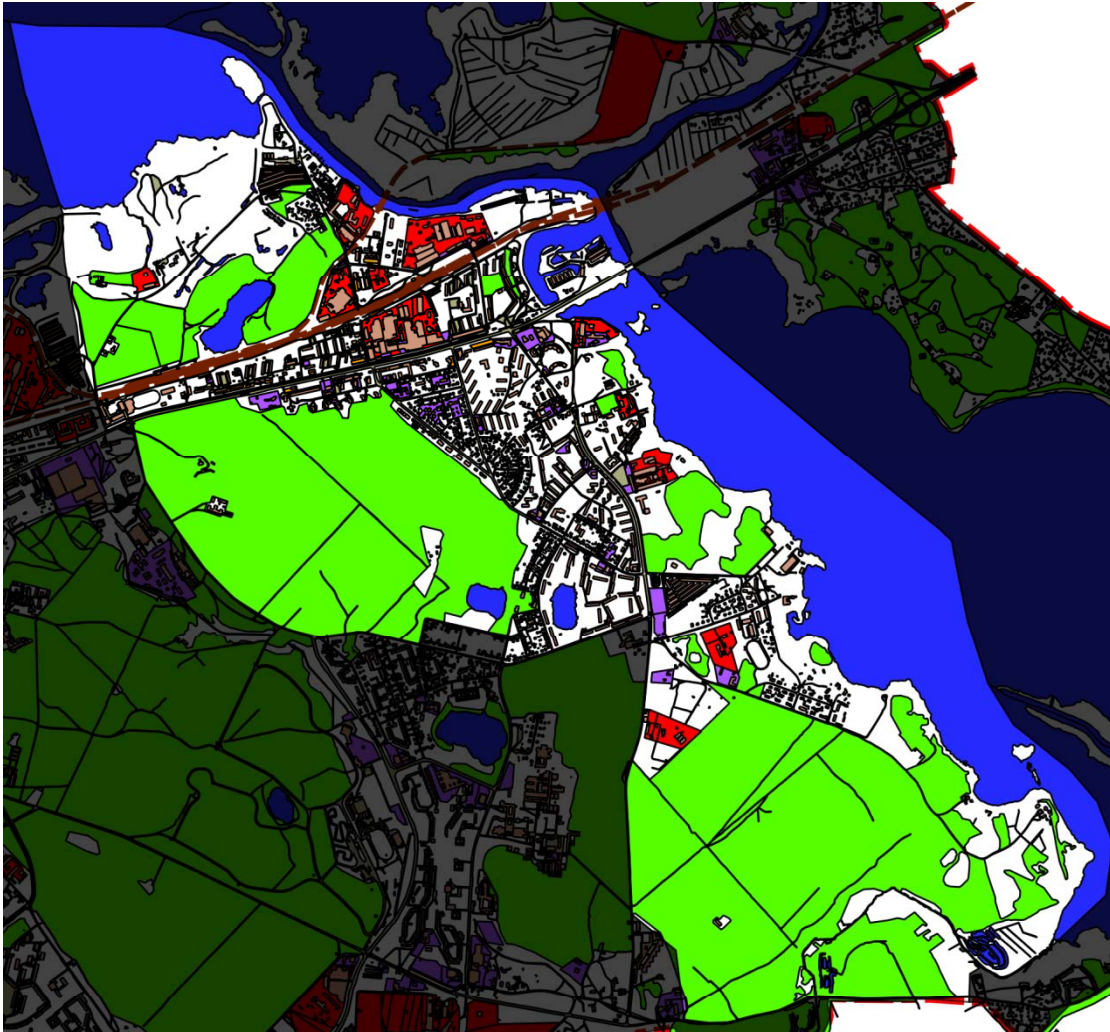
- **Social infrastructure:**
  - Wide offer;
  - Well planed;
  - Good accessibility;
  - Partly old-fashioned and unadapted infrastructure;
  - Lack of kindergartens



# Social infrastructure in Jugla

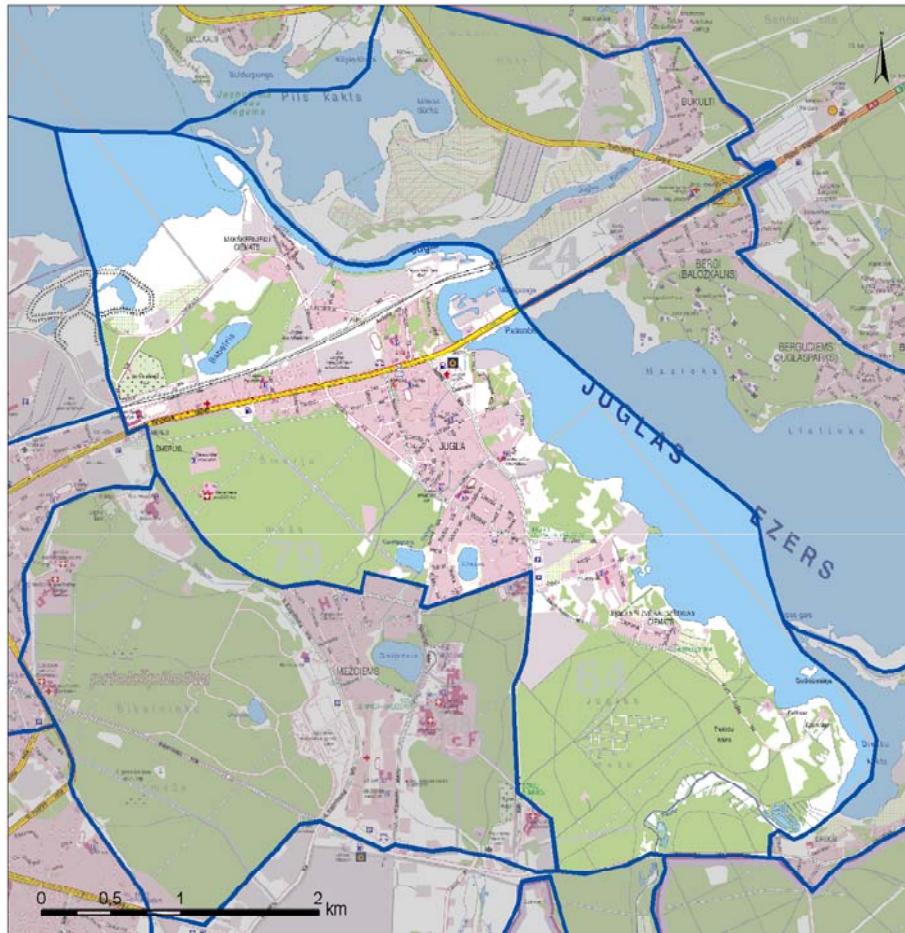


# Economy



- **Economy:**
  - Mostly trade, commerce (bank branches) and services;
  - Undeveloped manufacturing although available infrastructure and territories;
  - Browfields nearby the railway

# Transport:



- **Transport:**
  - All kind available:
    - Train;
    - Busses (City transit, innercity buss terminal;
    - International and interurban busses (transit);
    - Tram (terminal);
    - Private minibuses;
    - Bicycle rout



# JUGLA Neighborhood - Challenges

- Visual identity;
- Public overnight parking;
- Inner accessibility by foot, bicycle and public transport;
- Street Lightning;
- Housing Stock restoration;
- Divide or not?

# JUGLA Neighborhood - Challenges

- Financial instruments (Financial engineering, special funds, direct investments) – for complex approach;
- Public involvement – discussions – information campaigns;
- Legal issues – property question;
- ...

## WP 3 Urban Development



Part-financed by the European Union  
(European Regional Development Fund  
and European Neighbourhood and  
Partnership Instrument)



# THANK YOU!

**Martins Menniks**  
Riga City

**October, 2010**  
Brrlin